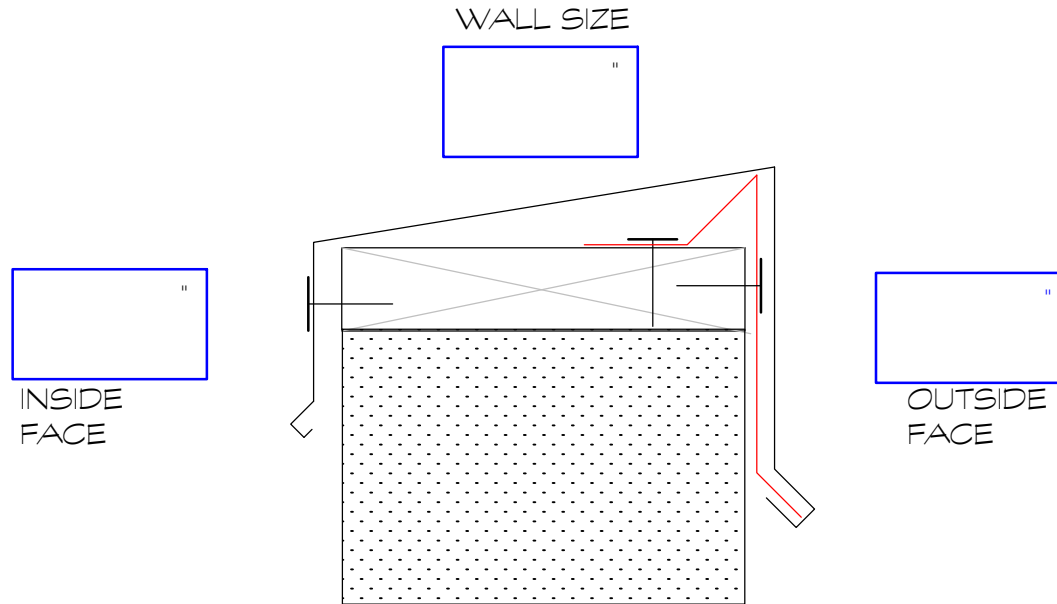


# EXPOSED FASTENER COPING ORDER/QUOTE FORM

Project Name: \_\_\_\_\_  
 Customer: \_\_\_\_\_  
 Customer Contact: \_\_\_\_\_  
 Phone: \_\_\_\_\_  
 Email: \_\_\_\_\_  
 Date: \_\_\_\_\_

Check the appropriate system and fill in dimensions



Material:

22 GA STEEL

24 GA. STEEL

.032 ALUMINUM

.040" ALUMINUM

.050" ALUMINUM

.063" ALUMINUM

Color: \_\_\_\_\_

Finish: \_\_\_\_\_

CHECK COLOR  
MATRIX FOR  
AVAILABILITY

Quantities:

\_\_\_\_\_ LINEAL FEET ( 10' - 0" )

\_\_\_\_\_ STRETCH OUT

\_\_\_\_\_ HIDDEN SPLICE PLATES (EA.)

\_\_\_\_\_ RISE ON CLEAT (IN.)

\_\_\_\_\_ OUTSIDE MITER(S) ( 90° )

\_\_\_\_\_ OUTSIDE MITER(S) ( \_\_\_\_° )

\_\_\_\_\_ INSIDE MITER(S) ( 90° )

\_\_\_\_\_ INSIDE MITER(S) ( \_\_\_\_° )

\_\_\_\_\_ EA. RIGHT END CAP

\_\_\_\_\_ EA. LEFT END CAP

COPPER

STAINLESS STEEL

National Metal Sales, Inc.

Fax: (734) 942-3075

Email: Pat@NationalMetalSales.com

DATE:

SHEET \_\_\_\_ OF \_\_\_\_